

HiLook

Great View, Great Value

PRODUCT CATALOG

2021 H1

IP Solution / Turbo HD Solution / Transmission

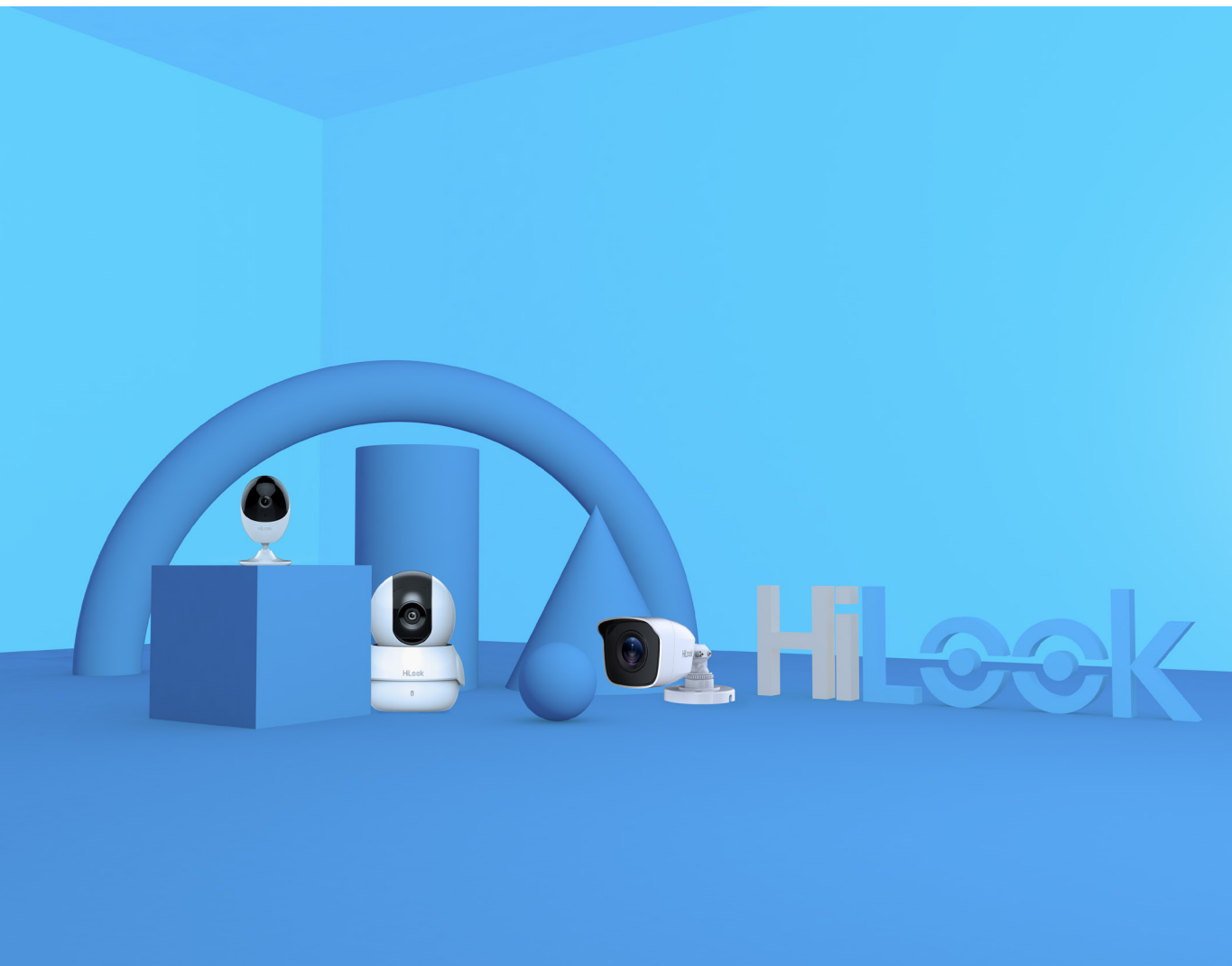


Table of Contents

HiLook Overview	1
<hr/>	
Key Features	
Safe and Sound	4
See Who's There, Wherever and Whenever	8
Click and Connect	9
<hr/>	
Product Showcase	
IP Solution	12
Turbo HD Solution	23
Transmission Products	38
Accessories	40
<hr/>	



VIDEO SECURITY SOLUTION

Looking for High Performance? Looking for Low Price? Look at HiLook. HiLook, Hikvision's offshoot brand, hits the bullseye for the entry-level video security market, providing very cost-effective, easy-to-use and reliable products and services.



RELIABLE
QUALITY



EASE OF USE



ATTRACTIVE
PRICE

DIVERSE PRODUCT LINES FOR VARIOUS DEMANDS

HiLook offers an extensive portfolio of products and solutions to meet the wide range of user demands.

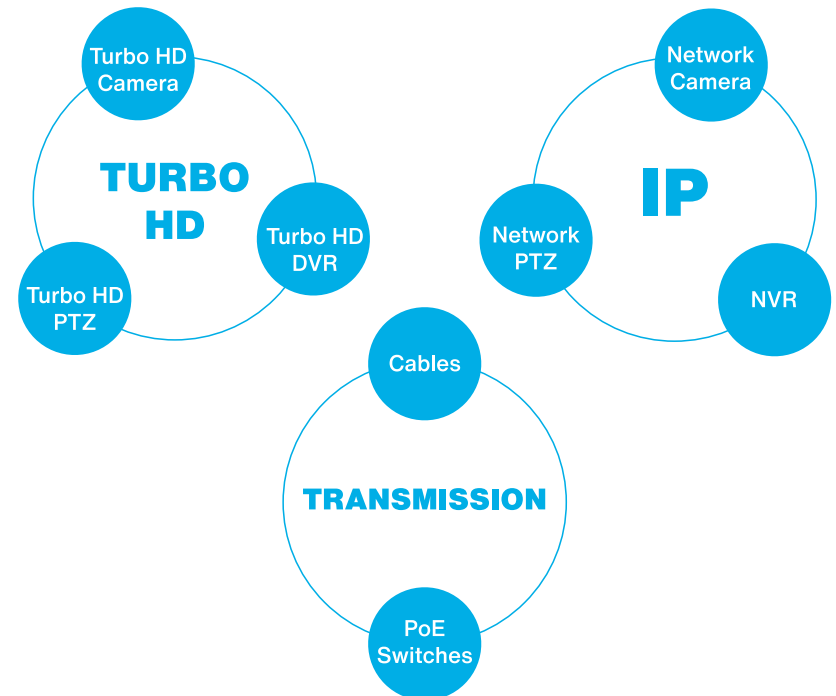
IP Solution: Network Cameras, Network PTZ Cameras, NVRs

Turbo HD Solution:

Turbo HD Cameras, Turbo HD PTZ Cameras, Turbo HD DVRs

Transmission: Switches, Coaxial Cables, Network Cables

Expect even more product lines under the HiLook brand in the near future.



OUTSTANDING PRODUCT QUALITY

The superior cost-efficiency of HiLook products does not imply any compromise in product quality, which are guaranteed by:

- Over 80% automated manufacturing
- Options for more durable materials such as full metal
- Comprehensive authoritative certifications of the industry
- Stringent tests for ingress protection, vandal resistance, aging, etc.

SAFE AND SOUND

Ever So Clear

Cameras with resolutions up to 5 MP capture rich details with wider coverage, providing strong evidence for post-event search.



Prolonged HD recordings enabled by the H.265+ smart codec provides more details to find the right evidence users might have forgotten.

Recorded file size for the same amount of time

100%



H.264

50%



H.265

25%



H.265+

Note: this test result is for reference only.



Ever So Bright

The ColorVu technology ensures 24/7 colorful imaging even in dim light conditions, providing a safer night environment for everyone – and available at affordable prices.

Note: refer to page 23 and page 35 for product specifications.

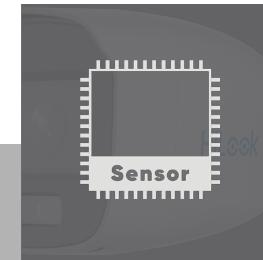


Combining Great Technologies
for Greater Image Quality



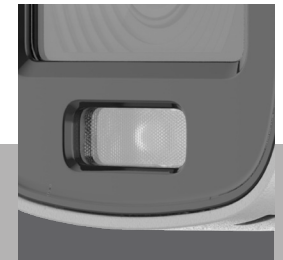
F1.0 Super Aperture

Collects more light to produce brighter image.



Advanced Sensor

Vastly improves the utilization of available light.



Friendly Lighting

Soft and warm supplemental light works to guarantee colorful images when in zero-light environments.

Ever So Evident

Integrating audio into CCTV security system is a groundbreaking advancement, providing users with more situational awareness and more evidence after an event. Combining audio and video enhances security and will be universal for the video security industry in the future.



SEE WHO'S THERE, WHEREVER AND WHENEVER

The HiLookVision app allows live viewing from anywhere and at any time via smart phones, and sends timely notifications and alarms to end-users when events occur.



Users can also stream the live feed using the HiLookVision PC Client or monitors connected to a DVR or NVR for more details and better viewing experience.

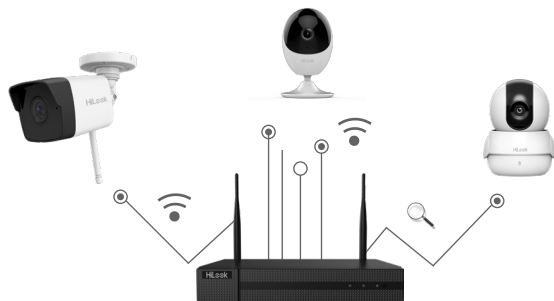


With select NVR models that allow separate video channel output to more than one monitors, you can monitor multiple channels simultaneously and more conveniently.



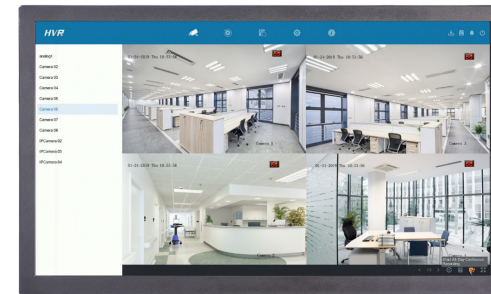
CLICK AND CONNECT

With HiLook, a professional video security system can be easy. Users can choose and install Wi-Fi products by themselves. The Wi-Fi match function allows automatic connection between cameras and the NVR.



For users preferring non-Wi-Fi products, plug-and-play systems are also available either with PoE models or analog products. Automatic connection is supported by all HiLook products, non-PoE models included.

As a compact solution for the SSMB market, HiLook offers the simplest solutions for security management.



- Simple and concise design with only five necessary models on the dashboard header, making it easier for users to view live, search, and set alarm schedules when needed.

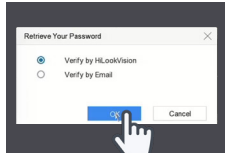
E-UI: Efficient User Interface for HiLook NVRs and DVRs

Forgot a Password? Just Scan and Reset


Users can reset their NVR or DVR password using the HiLookVision app with a registered account that is bound with their device account. Resetting a password via email is also supported. Both methods are simple and safe.



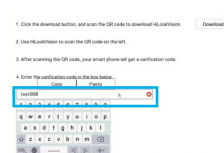
01
Choose "Verify with HiLookVision"



02
Scan the QR code on the GUI and get a verification code



03
Key in the verification code and reset password



Tips: The HiLookVision account needs to be bound with devices in advance, so we highly recommend binding the device to your HiLookVision app account during activation.

PRODUCT SHOWCASE

IP SOLUTION

TURBO HD SOLUTION

TRANSMISSION PRODUCTS

ACCESSORIES



IP SOLUTION

HiLook IP cameras render up to 5 MP, super-HD imaging with an optimized bandwidth via its highly efficient H.265+ video compression. The Wi-Fi models feature flexible, nearly-effortless installation and quick connection for instant view. With no difficult IP setup and only one cable for power and data, the PoE feature connects cameras and NVRs quickly and easily. And the NVRs ensure smooth live view and fluid playback through reliable video recording and management. HiLook is perfect for small business security.



IPC-B150H
5 MP Fixed-lens
Bullet

- Up to 5 MP high resolution
- 2.8 or 4 mm fixed lens
- Supports H.265+/H.265, H.264+/H.264
- IR Range: Up to 30 m
- IP67, 120 dB WDR
- Supports PoE
- Front Cover: Metal
- Back Cover & Bracket: Plastic



IPC-D150H
5 MP Fixed-lens
Dome

- Up to 5 MP high resolution
- 2.8 or 4 mm fixed lens
- Supports H.265+/H.265, H.264+/H.264
- IR Range: Up to 30 m
- IP67, IK10, 120 dB WDR
- Supports PoE
- Base: Metal, Cover: Plastic



IPC-B149H
4 MP Fixed-lens
ColorVu Bullet

NEW

- Up to 4 MP high resolution
- 2.8 or 4 mm fixed lens
- Supports H.265+/H.265, H.264+/H.264
- White Light Range: Up to 30 m
- IP67, 120 dB WDR
- Supports PoE
- Front Cover: Metal
- Back Cover & Bracket: Metal



IPC-T249H
4 MP Fixed-lens
ColorVu Turret

NEW

- Up to 4 MP high resolution
- 2.8 or 4 mm fixed lens
- Supports H.265+/H.265, H.264+/H.264
- White Light Range: Up to 30 m
- IP67, 120 dB WDR
- Supports PoE
- Camera Body: Metal, Bottom Base: Plastic



IPC-T250H
5 MP Fixed-lens
Turret

- Up to 5 MP high resolution
- 2.8 or 4 mm fixed lens
- Supports H.265+/H.265, H.264+/H.264
- IR Range: Up to 30 m
- IP67, 120 dB WDR
- Supports PoE
- Camera Body: Metal, Bottom Base: Plastic



IPC-B650H-Z
5 MP Varifocal
Bullet

- Up to 5 MP high resolution
- 2.8 to 12 mm varifocal lens
- Supports H.265/H.265+, H.264/H.264+
- IP67, 120 dB WDR
- IR Range: Up to 30 m
- Supports PoE & TF card slot
- -Z: motorized varifocal lens



IPC-B140H
4 MP Fixed-lens
Bullet

HOT

- Up to 4 MP high resolution
- 2.8 or 4 mm fixed lens
- Supports H.265+/H.265, H.264+/H.264
- IR Range: Up to 30 m
- IP67, 120 dB WDR
- Supports PoE
- Front Cover: Metal
- Back Cover & Bracket: Plastic



IPC-D140H
4 MP Fixed-lens
Dome

HOT

- Up to 4 MP high resolution
- 2.8 or 4 mm fixed lens
- Supports H.265/H.265+, H.264/H.264+
- IR Range: Up to 30 m
- IP67, IK10, 120 dB WDR
- Supports PoE
- Base: Metal, Cover: Plastic



IPC-D650H-Z
5 MP Varifocal
Dome

- Up to 5 MP high resolution
- 2.8 to 12 mm varifocal lens
- Supports H.265/H.265+, H.264/H.264+
- IP67, IK10, 120 dB WDR
- IR Range: Up to 30 m
- Supports PoE & TF card slot
- -Z: motorized varifocal lens



IPC-T651H-Z
5 MP Varifocal
Turret

- Up to 5 MP high resolution
- 2.8 to 12 mm varifocal lens
- Supports H.265+/H.265, H.264+/H.264
- IP67, 120 dB WDR
- IR Range: Up to 30 m
- Supports PoE & TF card slot
- Motorized varifocal lens
- Camera Body: Metal, Bottom Base: Plastic



IPC-T240H
4 MP Fixed-lens
Turret

HOT

- Up to 4 MP high resolution
- 2.8 or 4 mm fixed lens
- Supports H.265/H.265+, H.264/H.264+
- IR Range: Up to 30 m
- IP67, 120 dB WDR
- Supports PoE
- Camera Body: Metal, Bottom Base: Plastic



IPC-B640H-Z
4 MP Varifocal
Bullet

HOT

- Up to 4 MP high resolution
- 2.8 to 12 mm varifocal lens
- Supports H.265+/H.265, H.264+/H.264
- IP67, 120 dB WDR
- IR Range: Up to 30 m
- Supports PoE & TF card slot
- -Z: motorized varifocal lens



IPC-D640H-Z
4 MP Varifocal
Dome

HOT

- Up to 4 MP high resolution
- 2.8 to 12 mm varifocal lens
- Supports H.265/H.265+, H.264/H.264+
- IP67, IK10, 120 dB WDR
- IR Range: Up to 30 m
- Supports PoE & TF card slot
- -Z: motorized varifocal lens



IPC-T641H-Z
4 MP Varifocal
Turret

- Up to 4 MP high resolution
- 2.8 to 12 mm varifocal lens
- Supports H.265+/H.265, H.264+/H.264
- IP67, 120 dB WDR
- IR Range: Up to 30 m
- Supports PoE & TF card slot
- Motorized varifocal lens
- Camera Body: Metal, Bottom Base: Plastic



IPC-T221H
2 MP Fixed-lens
Turret

- Up to 2 MP high resolution
- 2.8 or 4 mm fixed lens
- Supports H.265+/H.265, H.264+/H.264
- IR Range: Up to 30 m
- IP67, DWDR
- Supports PoE
- Camera Body: Metal, Bottom Base: Plastic



IPC-B620H-V/Z
2 MP Varifocal
Bullet

- Up to 2 MP high resolution
- 2.8 to 12 mm varifocal lens
- Supports H.265+/H.265, H.264+/H.264
- IP67, DWDR
- IR Range: Up to 30 m
- Supports PoE & TF card slot
- -Z: motorized varifocal lens



IPC-B129H
2 MP Fixed-lens
ColorVu Bullet

NEW

- Up to 2 MP high resolution
- 2.8 or 4 mm fixed lens
- Supports H.265+/H.265, H.264+/H.264
- White Light Range: Up to 30 m
- IP67, DWDR
- Supports PoE
- Front Cover: Metal
- Back Cover & Bracket: Metal



IPC-T229H
2 MP Fixed-lens
ColorVu Turret

NEW

- Up to 2 MP high resolution
- 2.8 or 4 mm fixed lens
- Supports H.265+/H.265, H.264+/H.264
- White Light Range: Up to 30 m
- IP67, DWDR
- Supports PoE
- Camera Body: Metal, Bottom Base: Plastic



IPC-D620H-V/Z
2 MP Varifocal
Dome

- Up to 2 MP high resolution
- 2.8 to 12 mm varifocal lens
- Supports H.265/H.265+, H.264/H.264+
- IP67, IK10, DWDR
- IR Range: Up to 30 m
- Supports PoE & TF card slot
- -Z: motorized varifocal lens



IPC-T621H-Z
2 MP Varifocal
Turret

- Up to 2 MP high resolution
- 2.8 to 12 mm varifocal lens
- Supports H.265+/H.265, H.264+/H.264
- IP67, DWDR
- IR Range: Up to 30 m
- Supports PoE & TF card slot
- Motorized varifocal lens
- Camera Body: Metal, Bottom Base: Plastic



IPC-B121H
2 MP Fixed-lens
Bullet

- Up to 2 MP high resolution
- 2.8 or 4 mm fixed lens
- Supports H.265+/H.265, H.264+/H.264
- IR Range: Up to 30 m
- IP67, DWDR
- Supports PoE
- Front Cover: Metal
- Back Cover & Bracket: Plastic



IPC-D121H
2 MP Fixed-lens
Dome

HOT

- Up to 2 MP high resolution
- 2.8 or 4 mm fixed lens
- Supports H.265+/H.265, H.264+/H.264
- IR Range: Up to 30 m
- IP67, IK10, DWDR
- Supports PoE
- Base: Metal, Cover: Plastic



IPC-C120-D/W
2 MP Fixed-lens
Wi-Fi Cube

HOT

- Up to 2 MP high resolution
- 2.0 mm fixed lens
- Supports H.265+/H.265, H.264+/H.264
- IR Range: Up to 10 m
- DWDR
- Built-in microphone and speaker, supporting two-way audio
- Built-in Wi-Fi
- Camera Body: Plastic, Bottom Base: Plastic



IPC-P120-D/W
2 MP Fixed-lens
Wi-Fi Mini PT

HOT

- Up to 2 MP high resolution
- 2.0 mm fixed lens
- Supports H.265+/H.265, H.264+/H.264
- IR Range: Up to 10 m
- DWDR
- Built-in microphone and speaker, supporting two-way audio
- Built-in Wi-Fi
- Camera Body: Plastic, Bottom Base: Plastic



PTZ-P332ZI-DE3
PanoVu Mini
IR PTZ

- 3 × 2 MP panoramic images, PTZ: 4× optical zoom
Color: 0.05 lux @ F2.0
B/W: 0.01 lux @ F2.0"
- Supports H.265
- DWDR
- IR: Up to 10 m
- 12 VDC & PoE+



PTZ-N4225I-DE
4-inch 2 MP
IR PTZ

- Up to 2 MP high definition, 25x optical zoom
Color: 0.005 lux @ F1.6,
B/W: 0.001 lux @ F1.6"
- Supports H.265+/H.265
- IP66, 120 dB WDR
- IR: 100 m
- 12 VDC & PoE+



PTZ-N4215I-DE
4-inch 2 MP
IR PTZ

- Up to 2 MP high definition, 15x optical zoom
Color: 0.005 lux @ F1.6,
B/W: 0.001 lux @ F1.6"
- Supports H.265+/H.265
- IP66, 120 dB WDR
- IR: 100 m
- 12 VDC & PoE+



PTZ-N4215-DE3
4-inch 2 MP
Non-IR PTZ

- Up to 2 MP high definition, 15x optical zoom
Color: 0.005 lux @ F1.6,
B/W: 0.001 lux @ F1.6"
- Supports H.265+/H.265
- 120 dB WDR
- 12 VDC & PoE+



PTZ-N2404I-DE3
2-inch 4 MP
IR PTZ

- Up to 4 MP high definition, 4x optical zoom
Color: 0.005 lux @ F1.6
B/W: 0.001 lux @ F1.6"
- Supports H.265+/H.265
- IP66, IK10, 120 dB WDR
- IR: Up to 20 m
- 12 VDC & PoE



PTZ-N2204I-DE3
2-inch 2 MP
IR PTZ

- Up to 4 MP high definition, 4x optical zoom
Color: 0.005 lux @ F1.6,
B/W: 0.001 lux @ F1.6"
- Supports H.265+/H.265
- IP66, IK10, 120 dB WDR
- IR: Up to 20 m
- 12 VDC & PoE



NVR-216MH-C/16P
16-ch 2-HDD
PoE NVR

- 160 Mbps input max.; up to 16 ch. of IP camera input
- 1-ch 8 MP / 5-ch 1080p decoding capacity
- Supports H.265/H.265+, H.264/H.264+
- 2 SATA interfacess, up to 8 TB
- Supports 16 PoE interfaces
- 380 1U case (Metal)



NVR-216MH-C
16-ch 2-HDD
Non-PoE NVR

- 160 Mbps input max.; up to 16 ch. of IP camera input
- 1-ch 8 MP / 5-ch 1080p decoding capacity
- Supports H.265/H.265+, H.264/H.264+
- 2 SATA interfacess, up to 8 TB
- 380 1U case (Metal)



NVR-208MH-C/8P
8-ch 2-HDD
PoE NVR

- 80 Mbps input max.; up to 8 ch. of IP camera input
- 1-ch 8 MP / 5-ch 1080p decoding capacity
- Supports H.265/H.265+, H.264/H.264+
- 2 SATA interfacess, up to 8 TB
- Supports 8 PoE interfaces
- 380 1U case (Metal)



NVR-208MH-C
8-ch 2-HDD
Non-PoE NVR

- 80 Mbps input max.; up to 8 ch. of IP camera input
- 1-ch 8 MP / 5-ch 1080p decoding capacity
- Supports H.265/H.265+, H.264/H.264+
- 2 SATA interfacess, up to 8 TB
- 380 1U case (Metal)



NVR-116MH-C
16-ch 1-HDD
Non-PoE NVR

- 160 Mbps input max.; up to 16 ch. of IP camera input
- 1-ch 8 MP / 5-ch 1080p decoding capacity
- Supports H.265/H.265+, H.264/H.264+
- 1 SATA interface, up to 8 TB
- 260 1U case (Metal)



NVR-108MH-C/8P
8-ch 1-HDD
PoE NVR

HOT

- 80 Mbps input max.; up to 8 ch. of IP camera input
- 1-ch 8 MP / 5-ch 1080p decoding capacity
- Supports H.265/H.265+, H.264/H.264+
- 1 SATA interface, up to 8 TB
- Supports 8 PoE interfaces
- 260 1U case (Metal)



NVR-108MH-C
8-ch 1-HDD
Non-PoE NVR

HOT

- 80 Mbps input max.; up to 8 ch. of IP camera input
- 1-ch 8 MP / 5-ch 1080p decoding capacity
- Supports H.265/H.265+, H.264/H.264+
- 1 SATA interface, up to 8 TB
- 260 1U case (Metal)



NVR-104MH-D/4P
4-ch 1-HDD
PoE NVR

HOT

- 40Mbps input max.; up to 4 ch. IP camera input
- 1-ch @ 6 MP / 4-ch @ 1080p decoding capacity
- Supports H.265/H.265+, H.264/H.264+
- 1 SATA interface, up to 6 TB
- Supports 4 PoE interfaces
- 260 1U case (Metal)



NVR-104MH-D
4-ch 1-HDD
Non-PoE NVR

- 40 Mbps input max.; up to 4 ch. of IP camera input
- 1-ch @ 6 MP / 4-ch @ 1080p decoding capacity
- Supports H.265/H.265+, H.264/H.264+
- 1 SATA interface, up to 6 TB
- 260 1U case (Metal)



NVR-104MH-C/4P
4-ch 1-HDD
PoE NVR

HOT

- 40 Mbps input max.; up to 4 ch. of IP camera input
- 1-ch 8 MP / 5-ch 1080p decoding capacity
- Supports H.265/H.265+, H.264/H.264+
- 1 SATA interface, up to 8 TB
- Supports 4 PoE interfaces
- 260 1U case (Metal)



NVR-104MH-C
4-ch 1-HDD
Non-PoE NVR

HOT

- 40 Mbps input max.; up to 4 ch. of IP camera input
- 1-ch 8 MP / 5-ch 1080p decoding capacity
- Supports H.265/H.265+, H.264/H.264+
- 1 SATA interface, up to 8 TB
- 260 1U case (Metal)



NVR-108H-D/8P
8-ch 1-HDD
PoE NVR

- 60 Mbps input max.; up to 8 ch. of IP camera input
- 1-ch @ 6 MP / 4-ch @ 1080p decoding capacity
- Supports H.265/H.265+, H.264/H.264+
- 1 SATA interface, up to 6 TB
- Supports 8 PoE interfaces
- Mini 1U Case (Plastic)



NVR-108H-D
8-ch 1-HDD
Non-PoE NVR

- 60 Mbps input max.; up to 8 ch. of IP camera input
- 1-ch @ 6 MP / 4-ch @ 1080p decoding capacity
- Supports H.265/H.265+, H.264/H.264+
- 1 SATA interface, up to 6 TB
- Mini 1U Case (Plastic)



NVR-108MH-D/8P
8-ch 1-HDD
PoE NVR

- 60 Mbps input max.; up to 8 ch. of IP camera input
- 1-ch @ 6 MP / 4-ch @ 1080p decoding capacity
- Supports H.265/H.265+, H.264/H.264+
- 1 SATA interface, up to 6 TB
- Supports 8 PoE interfaces
- 260 1U case (Metal)



NVR-108MH-D
8-ch 1-HDD
Non-PoE NVR

- 60 Mbps input max.; up to 8 ch. of IP camera input
- 1-ch @ 6 MP / 4-ch @ 1080p decoding capacity
- Supports H.265/H.265+, H.264/H.264+
- 1 SATA interface, up to 6 TB
- 260 1U case (Metal)



NVR-104H-D/4P
4-ch 1-HDD
PoE NVR

- 40 Mbps input max.; up to 4 ch. of IP camera input
- 1-ch @ 6 MP / 4-ch @ 1080p decoding capacity
- Supports H.265/H.265+, H.264/H.264+
- 1 SATA interface, up to 6 TB
- Supports 4 PoE interfaces
- Mini 1U Case (Plastic)



NVR-104H-D
4-ch 1-HDD
Non-PoE NVR

- 40 Mbps input max.; up to 4 ch. of IP camera input
- 1-ch @ 6 MP / 4-ch @ 1080p decoding capacity
- Supports H.265/H.265+, H.264/H.264+
- 1 SATA interface, up to 6 TB
- Mini 1U Case (Plastic)



NVR-104MH-D/W
4-ch 1-HDD Wi-Fi
Video Recorder

- 50 Mbps input max.; up to 4 ch. of IP camera input
- 1-ch @ 4 MP / 4-ch @ 1080p decoding capacity
- Supports H.265/H.265+, H.264/H.264+
- 1 SATA interface, up to 6 TB
- 260 1U case (Metal)
- Wi-Fi Antenna Structure: 2*MIMO
- Wi-Fi Transmission Distance: 80 m



NVR-108MH-D/W
8-ch 1-HDD Wi-Fi
Video Recorder

- 50 Mbps input max.; up to 8 ch. of IP camera input
- 1-ch @ 4 MP / 4-ch @ 1080p decoding capacity
- Supports H.265/H.265+, H.264/H.264+
- 1 SATA interface, up to 6 TB
- 260 1U case (Metal)
- Wi-Fi Antenna Structure: 2*MIMO
- Wi-Fi Transmission Distance: 80 m



IK-4042TH-MH/P 2 MP Turret PoE Kit

- NVR: 4-ch Network Video Recorder
- IPC: 4 * 2 MP Fixed-lens Turret
- Cable: Four 18-meter Cat 5e network cables, one 2-meter Cat 5e network cable, one 2-meter HDMI cable
- Supports 4 PoE interfaces
- Supports H.265/H.264



IK-4042BH-MH/P 2 MP Bullet PoE Kit

- NVR: 4-ch Network Video Recorder
- IPC: 4 * 2 MP Fixed-lens Bullet
- Cable: Four 18-meter Cat 5e network cables, one 2-meter Cat 5e network cable, one 2-meter HDMI cable
- Supports 4 PoE interfaces
- Supports H.265/H.264



IK-4142TH-MH/P 2 MP Turret PoE Kit

- NVR: 4-ch 1-HDD Network Video Recorder
- IPC: 4 * 2 MP Fixed-lens Turret
- Cable: Four 18-meter Cat 5e network cables, one 2-meter Cat 5e network cable, one 2-meter HDMI cable
- HDD: 1 TB
- Supports 4 PoE interfaces
- Supports H.265/H.264



IK-4142BH-MH/P 2 MP Bullet PoE Kit

- NVR: 4-ch 1-HDD Network Video Recorder
- IPC: 4 * 2 MP Fixed-lens Bullet
- Cable: Four 18-meter Cat 5e network cable, one 2-meter Cat 5e network cable, one 2-meter HDMI cable
- HDD: 1 TB
- Supports 4 PoE interfaces
- Supports H.265/H.264



IK-4142B-MH/W(B) 2 MP Bullet Wi-Fi Kit

- NVR: 4-ch 1-HDD Wi-Fi Video Recorder
- IPC: 4 * 2 MP IR Fixed Bullet Wi-Fi Camera
- Cable: One 1-meter Cat 5e network cable, one 2-meter HDMI cable
- HDD: 1 TB
- Supports H.265/H.264
- Wi-Fi Antenna Structure: 2*MIMO
- Wi-Fi Transmission Distance: 80 m

TURBO HD SOLUTION

HiLook's Turbo HD cameras feature plug-and-play capabilities using coaxial cables and render superior imaging in as little light as 0.005 lux. The PIR detection with strobe light and siren, and compatibility with other brands take this solution far beyond its competitors. HiLook Turbo HD DVRs also feature an easy-to-use UI, giving security personnel powerful camera management and recording with excellent compression technology.



THC-B240-M
4 MP Fixed-lens
Bullet

- 4 MP CMOS Sensor
- 2.8, 3.6 or 6 mm lens
- 40 m IR, ICR, 0.01 lux @ F1.2
- 12 VDC, Smart IR, DWDR, DNR, OSD Menu
- IP66
- Supports HD-TVI / AHD / CVI / CVBS video output
- Material: Metal



THC-B240
4 MP Fixed-lens
Bullet

- 4 MP CMOS Sensor
- 2.8, 3.6 or 6 mm lens
- 40 m IR, ICR, 0.01 lux @ F1.2
- 12 VDC, Smart IR, DWDR, DNR, OSD Menu
- IP66
- Supports HD-TVI / AHD / CVI / CVBS video output
- Material: Metal & Plastic



THC-B140-M
4 MP Fixed-lens
Mini Bullet

- 4 MP CMOS Sensor
- 2.8, 3.6 or 6 mm lens
- 20 m IR, ICR, 0.01 lux @ F1.2
- 12 VDC, Smart IR, DWDR, DNR, OSD Menu
- IP66
- Supports HD-TVI / AHD / CVI / CVBS video output
- Material: Metal



THC-B140-P
4 MP Fixed-lens
Mini Bullet

- 4 MP CMOS Sensor
- 2.8, 3.6 or 6 mm lens
- 20 m IR, ICR, 0.01 lux @ F1.2
- 12 VDC, Smart IR, DWDR, DNR, OSD Menu
- IP66
- Supports HD-TVI / AHD / CVI / CVBS video output
- Material: Plastic



THC-D340-VF
4 MP Varifocal
Dome

- 4 MP CMOS Sensor
- 2.8 to 12 mm varifocal lens
- 40 m IR, ICR, 0.01 lux @ F1.2
- 12 VDC, Smart IR, DWDR, DNR, OSD Menu
- IP66, IK10
- Supports HD-TVI / AHD / CVI / CVBS video output
- Material: Metal



THC-T140-M
4 MP Fixed-lens
Mini Turret

- 4 MP CMOS Sensor
- 2.8, 3.6 or 6 mm lens
- 20 m IR, ICR, 0.01 lux @ F1.2
- 12 VDC, Smart IR, DWDR, DNR, OSD Menu
- IP66
- Supports HD-TVI / AHD / CVI / CVBS video output
- Material: Metal



THC-T140
4 MP Fixed-lens
Mini Turret

- 4 MP CMOS Sensor
- 2.8, 3.6 or 6 mm lens
- 20 m IR, ICR, 0.01 lux @ F1.2
- 12 VDC, Smart IR, DWDR, DNR, OSD Menu
- IP66
- Supports HD-TVI / AHD / CVI / CVBS video output
- Material: Metal & Plastic



THC-T140-P
4 MP Fixed-lens
Mini Turret

- 4 MP CMOS Sensor
- 2.8, 3.6 or 6 mm lens
- 20 m IR, ICR, 0.01 lux @ F1.2
- 12 VDC, Smart IR, DWDR, DNR, OSD Menu
- Supports HD-TVI / AHD / CVI / CVBS video output
- Material: Plastic



THC-B229-M
2 MP Fixed-lens
ColorVu Bullet

- 2 MP CMOS Sensor
- 2.8, 3.6 or 6 mm fixed focal lens
- 40 m white light distance, 0.001 Lux @ F1.0
- 12 VDC, Smart Light, DWDR, OSD Menu, 3D DNR
- IP66
- Supports HD-TVI / AHD / CVI / CVBS video output
- Material: Metal



THC-B129-M
2 MP Fixed-lens
ColorVu Mini Bullet

- 2 MP CMOS Sensor
- 2.8, 3.6 or 6 mm fixed focal lens
- 20 m white light distance, 0.001 Lux @ F1.0
- 12 VDC, Smart Light, DWDR, OSD Menu, 3D DNR
- IP66
- Supports HD-TVI / AHD / CVI / CVBS video output
- Material: Metal



THC-T240-M
4 MP Fixed-lens
Turret

- 4 MP CMOS Sensor
- 2.8, 3.6 or 6 mm lens
- 40 m IR, ICR, 0.01 lux @ F1.2
- 12 VDC, Smart IR, DWDR, DNR, OSD Menu
- IP66
- Supports HD-TVI / AHD / CVI / CVBS video output
- Material: Metal



THC-T240-P
4 MP Fixed-lens
Turret

- 4 MP CMOS Sensor
- 2.8, 3.6 or 6 mm lens
- 40 m IR, ICR, 0.01 lux @ F1.2
- 12 VDC, Smart IR, DWDR, DNR, OSD Menu
- IP66
- Supports HD-TVI / AHD / CVI / CVBS video output
- Material: Plastic



THC-B129-P
2 MP Fixed-lens
ColorVu Mini Bullet

- 2 MP CMOS Sensor
- 2.8, 3.6 or 6 mm fixed focal lens
- 20 m white light distance, 0.001 Lux @ F1.0
- 12 VDC, Smart Light, DWDR, OSD Menu, 3D DNR
- IP66
- Supports HD-TVI / AHD / CVI / CVBS video output
- Material: Plastic



THC-T229-M
2 MP Fixed-lens
ColorVu Turret

- 2 MP CMOS Sensor
- 2.8, 3.6 or 6 mm fixed focal lens
- 40 m white light distance, 0.001 Lux @ F1.0
- 12 VDC, Smart Light, DWDR, OSD Menu, 3D DNR
- IP66
- Supports HD-TVI / AHD / CVI / CVBS video output
- Material: Metal



THC-B340-VF
4 MP Varifocal
Bullet

- 4 MP CMOS Sensor
- 2.8 to 12 mm varifocal lens
- 40 m IR, ICR, 0.01 lux @ F1.2
- 12 VDC, Smart IR, DWDR, DNR, OSD Menu
- IP66
- Supports HD-TVI / AHD / CVI / CVBS video output
- Material: Metal & Plastic



THC-T340-VF
4 MP Varifocal
Turret

- 4 MP CMOS Sensor
- 2.8 to 12 mm varifocal lens
- 40 m IR, ICR, 0.01 lux @ F1.2,
- 12 VDC, Smart IR, DWDR, DNR, OSD Menu,
- IP66
- Supports HD-TVI / AHD / CVI / CVBS video output
- Material: Metal & Plastic



THC-T129-M
2 MP Fixed-lens
ColorVu Mini Turret

- 2 MP CMOS Sensor
- 2.8, 3.6 or 6 mm fixed focal lens
- 20 m white light distance, 0.001 Lux @ F1.0
- 12 VDC, Smart Light, DWDR, OSD Menu, 3D DNR
- IP66
- Supports HD-TVI / AHD / CVI / CVBS video output
- Material: Metal



THC-T129-P
2 MP Fixed-lens
ColorVu Mini Turret

- 2 MP CMOS Sensor
- 2.8 mm, 3.6 mm, 6 mm fixed focal lens
- 20 m white light distance, 0.001 Lux @ F1.0
- 12 VDC, Smart Light, DWDR, OSD Menu, 3D DNR
- Supports HD-TVI / AHD / CVI / CVBS video output
- Material: Plastic



THC-B223-M
2 MP Fixed-lens
Bullet

- 2 MP CMOS Sensor
- 2.8, 3.6 or 6 mm lens
- 50 m IR, ICR, 0.005 lux @ F1.2
- 12 VDC, Smart IR, True WDR, 3D DNR, OSD Menu
- IP66
- Supports HD-TVI / AHD / CVI / CVBS video output
- Material: Metal



THC-B223
2 MP Fixed-lens
Bullet

- 2 MP CMOS Sensor
- 2.8, 3.6 or 6 mm lens
- 50 m IR, ICR, 0.005 lux @ F1.2
- 12 VDC, Smart IR, True WDR, 3D DNR, OSD Menu
- IP66
- Supports HD-TVI / AHD / CVI / CVBS video output
- Material: Metal & Plastic



THC-T123-P
2 MP Fixed-lens
Mini Turret

- 2 MP CMOS Sensor
- 2.8, 3.6 or 6 mm lens
- 30 m IR, ICR, 0.005 lux @ F1.2
- 12 VDC, Smart IR, True WDR, 3D DNR, OSD
- Supports HD-TVI / AHD / CVI / CVBS video output
- Material: Plastic



THC-T223-M
2 MP Fixed-lens
Turret

- 2 MP CMOS Sensor
- 2.8, 3.6 or 6 mm lens
- 50 m IR, ICR, 0.005 lux @ F1.2
- 12 VDC, Smart IR, True WDR, 3D DNR, OSD Menu
- IP66
- Supports HD-TVI / AHD / CVI / CVBS video output
- Material: Metal



THC-B123-M
2 MP Fixed-lens
Mini Bullet

- 2 MP CMOS Sensor
- 2.8, 3.6 or 6 mm lens
- 30 m IR, ICR, 0.005 lux @ F1.2
- 12 VDC, Smart IR, True WDR, 3D DNR, OSD Menu
- IP66
- Supports HD-TVI / AHD / CVI / CVBS video output
- Material: Metal



THC-B123-P
2 MP Fixed-lens
Mini Bullet

- 2 MP CMOS Sensor
- 2.8, 3.6 or 6 mm lens
- 30 m IR, ICR, 0.005 lux @ F1.2
- 12 VDC, Smart IR, True WDR, 3D DNR, OSD Menu
- IP66
- Supports HD-TVI / AHD / CVI / CVBS video output
- Material: Plastic



THC-T223-P
2 MP Fixed-lens
Turret

- 2 MP CMOS Sensor
- 2.8, 3.6 or 6 mm lens
- 50 m IR, ICR, 0.005 lux @ F1.2
- 12 VDC, Smart IR, True WDR, 3D DNR, OSD Menu
- IP66
- Supports HD-TVI / AHD / CVI / CVBS video output
- Material: Plastic



THC-B323-Z
2 MP Varifocal
Bullet

- 2 MP CMOS Sensor
- 2.7 to 13.5 mm varifocal lens
- 70 m IR, ICR, 0.005 lux @ F1.2
- 12 VDC, Smart IR, True WDR, 3D DNR, OSD Menu, Auto Focus
- IP66
- Supports HD-TVI / AHD / CVI / CVBS video output
- Material: Metal



THC-T123-M
2 MP Fixed-lens
Mini Turret

- 2 MP CMOS Sensor
- 2.8, 3.6 or 6 mm lens
- 50 m IR, ICR, 0.005 lux @ F1.2
- 12 VDC, Smart IR, True WDR, 3D DNR, OSD Menu
- IP66
- Supports HD-TVI / AHD / CVI / CVBS video output
- Material: Metal



THC-T123
2 MP Fixed-lens
Mini Turret

- 2 MP CMOS Sensor
- 2.8, 3.6 or 6 mm lens
- 30 m IR, ICR, 0.005 lux @ F1.2
- 12 VDC, Smart IR, True WDR, 3D DNR, OSD Menu
- IP66
- Supports HD-TVI / AHD / CVI / CVBS video output
- Material: Metal & Plastic



THC-D323-Z
2 MP Varifocal
Dome

- 2 MP CMOS Sensor
- 2.7 to 13.5 mm varifocal lens
- 70 m IR, ICR, 0.005 lux @ F1.2
- 12 VDC, Smart IR, True WDR, 3D DNR, OSD Menu, Auto Focus
- IP66, IK10
- Supports HD-TVI / AHD / CVI / CVBS video output
- Material: Metal



THC-T323-Z
2 MP Varifocal
Turret

- 2 MP CMOS Sensor
- 2.7 to 13.5 mm varifocal lens
- 70 m IR, ICR, 0.005 lux @ F1.2,
- 12 VDC, Smart IR, True WDR, 3D DNR, OSD Menu, Auto Focus
- IP66
- Supports HD-TVI / AHD / CVI / CVBS video output
- Material: Metal



THC-B120-MS
2 MP Built-in Mic
Bullet

- 2 MP CMOS Sensor
- 2.8, 3.6 or 6 mm lens
- 30 m IR, ICR, 0.01 lux @ F1.2
- 12 VDC, Smart IR, DWDR, DNR, OSD Menu
- IP66
- Supports HD-TVI / AHD / CVI / CVBS video output
- Audio: Built-in microphone
- Material: Metal



THC-B120-PS
2 MP Built-in Mic
Bullet

- 2 MP CMOS Sensor
- 2.8, 3.6 or 6 mm lens
- 25 m IR, ICR, 0.01 lux @ F1.2
- 12 VDC, Smart IR, DWDR, DNR, OSD Menu
- IP66
- Supports HD-TVI / AHD / CVI / CVBS video output
- Audio: Built-in microphone
- Material: Plastic



THC-B220
2 MP Fixed-lens
Bullet

- 2 MP CMOS Sensor
- 2.8, 3.6 or 6 mm lens
- 40 m IR, ICR, 0.01 lux @ F1.2
- 12 VDC, Smart IR, DWDR, DNR, OSD Menu
- IP66
- Supports HD-TVI / AHD / CVI / CVBS video output
- Material: Metal & Plastic



THC-B120-M
2 MP Fixed-lens
Mini Bullet

- 2 MP CMOS Sensor
- 2.8, 3.6 or 6 mm lens
- 20 m IR, ICR, 0.01 lux @ F1.2
- 12 VDC, Smart IR, DWDR, DNR, OSD Menu
- IP66
- Supports HD-TVI / AHD / CVI / CVBS video output
- Material: Metal



THC-T220-MS
2 MP Built-in Mic
Turret

- 2 MP CMOS Sensor
- 2.8, 3.6 or 6 mm lens
- 40 m IR, ICR, 0.01 lux @ F1.2
- 12 VDC, Smart IR, DWDR, DNR, OSD Menu
- IP66
- Supports HD-TVI / AHD / CVI / CVBS video output
- Audio: Built-in microphone
- Material: Metal



THC-T120-MS
2 MP Built-in Mic
Turret

- 2 MP CMOS Sensor
- 2.8, 3.6 or 6 mm lens
- 30 m IR, ICR, 0.01 lux @ F1.2
- 12 VDC, Smart IR, DWDR, DNR, OSD Menu
- IP66
- Supports HD-TVI / AHD / CVI / CVBS video output
- Audio: Built-in microphone
- Material: Metal



THC-B120-P(B)
2 MP Fixed-lens
Mini Bullet

- 2 MP CMOS Sensor
- 2.8, 3.6 or 6 mm lens
- 20 m IR, ICR, 0.01 lux @ F1.2
- 12 VDC, Smart IR, DWDR, DNR, OSD Menu
- IP66
- Supports HD-TVI / AHD / CVI / CVBS video output
- Material: Plastic



THC-T120-M
2 MP Fixed-lens
Mini Turret

- 2 MP CMOS Sensor
- 2.8, 3.6 or 6 mm lens
- 20 m IR, ICR, 0.01 lux @ F1.2
- 12 VDC, Smart IR, DWDR, DNR, OSD Menu
- IP66
- Supports HD-TVI / AHD / CVI / CVBS video output
- Material: Metal



THC-T120-PS
2 MP Built-in Mic
Turret

- 2 MP CMOS Sensor
- 2.8, 3.6 or 6 mm lens
- 20 m IR, ICR, 0.01 lux @ F1.2
- 12 VDC, Smart IR, DWDR, DNR, OSD Menu
- Supports HD-TVI / AHD / CVI / CVBS video output
- Audio: Built-in microphone
- Material: Plastic



THC-B220-M
2 MP Fixed-lens
Bullet

- 2 MP CMOS Sensor
- 2.8, 3.6 or 6 mm lens
- 40 m IR, ICR, 0.01 lux @ F1.2
- 12 VDC, Smart IR, DWDR, DNR, OSD Menu
- IP66
- Supports HD-TVI / AHD / CVI / CVBS video output
- Material: Metal



THC-T120
2 MP Fixed-lens
Mini Turret

- 2 MP CMOS Sensor
- 2.8, 3.6 or 6 mm lens
- 20 m IR, ICR, 0.01 lux @ F1.2
- 12 VDC, Smart IR, DWDR, DNR, OSD Menu
- IP66
- Supports HD-TVI / AHD / CVI / CVBS video output
- Material: Metal & Plastic



THC-T120-P
2 MP Fixed-lens
Mini Turret

- 2 MP CMOS Sensor
- 2.8, 3.6 or 6 mm lens
- 20 m IR, ICR, 0.01 lux @ F1.2
- 12 VDC, Smart IR, DWDR, DNR, OSD Menu
- Supports HD-TVI / AHD / CVI / CVBS video output
- Material: Plastic



THC-T220-M
2 MP Fixed-lens
Turret

- 2 MP CMOS Sensor
- 2.8, 3.6 or 6 mm lens
- 40 m IR, ICR, 0.01 lux @ F1.2
- 12 VDC, Smart IR, DWDR, DNR, OSD Menu
- IP66
- Supports HD-TVI / AHD / CVI / CVBS video output
- Material: Metal



THC-T220-P
2 MP Fixed-lens
Turret

- 2 MP CMOS Sensor
- 2.8, 3.6 or 6 mm lens
- 40 m IR, ICR, 0.01 lux @ F1.2
- 12 VDC, Smart IR, DWDR, DNR, OSD Menu
- IP66
- Supports HD-TVI / AHD / CVI / CVBS video output
- Material: Plastic



THC-B210-M
1 MP Fixed-lens
Bullet

- 1 MP CMOS Sensor
- 2.8, 3.6 or 6 mm lens
- 40 m IR, ICR, 0.01 lux @ F1.2
- 12 VDC, Smart IR, DWDR, OSD Menu
- IP66
- Supports HD-TVI / AHD / CVI / CVBS video output
- Material: Metal



THC-B210
1 MP Fixed-lens
Bullet

- 1 MP CMOS Sensor
- 2.8, 3.6 or 6 mm lens
- 40 m IR, ICR, 0.01 lux @ F1.2
- 12 VDC, Smart IR, DWDR, DNR, OSD Menu
- IP66
- Supports HD-TVI / AHD / CVI / CVBS video output
- Material: Metal & Plastic



THC-B320-VF
2 MP Varifocal
Bullet

- 2 MP CMOS Sensor
- 2.8 to 12 mm varifocal lens
- 40 m IR, ICR, 0.01 lux @ F1.2
- 12 VDC, Smart IR, DWDR, DNR, OSD Menu
- IP66
- Supports HD-TVI / AHD / CVI / CVBS video output
- Material: Metal & Plastic



THC-D320-VF
2 MP Varifocal
Dome

- 2 MP CMOS Sensor
- 2.8 to 12 mm varifocal lens
- 40 m IR, ICR, 0.01 lux @ F1.2
- 12 VDC, Smart IR, DWDR, DNR, OSD Menu
- IP66, IK10
- Supports HD-TVI / AHD / CVI / CVBS video output
- Material: Metal



THC-B110-M
1 MP Fixed-lens
Mini Bullet

- 1 MP CMOS Sensor
- 2.8, 3.6 or 6 mm lens
- 20 m IR, ICR, 0.01 lux @ F1.2
- 12 VDC, Smart IR, DWDR, DNR, OSD Menu
- IP66
- Supports HD-TVI / AHD / CVI / CVBS video output
- Material: Metal



THC-B110-P(B)
1 MP Fixed-lens
Mini Bullet

- 1 MP CMOS Sensor
- 2.8, 3.6 or 6 mm lens
- 20 m IR, ICR, 0.01 lux @ F1.2
- 12 VDC, Smart IR, DWDR, DNR, OSD Menu
- IP66
- Supports HD-TVI / AHD / CVI / CVBS video output
- Material: Plastic



THC-T320-VF
2 MP Varifocal
Turret

- 2 MP CMOS Sensor
- 2.8 to 12 mm varifocal lens
- 40 m IR, ICR, 0.01 lux @ F1.2,
- 12 VDC, Smart IR, DWDR, DNR, OSD Menu,
- IP66
- Supports HD-TVI / AHD / CVI / CVBS video output
- Material: Metal & Plastic



THC-B120-MPIRL
2 MP PIR Bullet

- 2.8 or 3.6 mm lens
- PIR detection, Strobe Light Alarm
- 20 m IR, ICR, 0.01 lux @ F1.2
- 12 VDC, Smart IR, DWDR, OSD Menu
- IP66
- Material: Metal



THC-T110-M
1 MP Fixed-lens
Mini Turret

- 1 MP CMOS Sensor
- 2.8, 3.6 or 6 mm lens
- 20 m IR, ICR, 0.01 lux @ F1.2
- 12 VDC, Smart IR, DWDR, DNR, OSD Menu
- IP66
- Supports HD-TVI / AHD / CVI / CVBS video output
- Material: Metal



THC-T110
1 MP Fixed-lens
Mini Turret

- 1 MP CMOS Sensor
- 2.8, 3.6 or 6 mm lens
- 20 m IR, ICR, 0.01 lux @ F1.2
- 12 VDC, Smart IR, DWDR, DNR, OSD Menu
- IP66
- Supports HD-TVI / AHD / CVI / CVBS video output
- Material: Metal & Plastic



THC-T110-P
1 MP Fixed-lens
Mini Turret

- 1 MP CMOS Sensor
- 2.8, 3.6 or 6 mm lens
- 20 m IR, ICR, 0.01 lux @ F1.2
- 12 VDC, Smart IR, DWDR, DNR, OSD Menu
- Supports HD-TVI / AHD / CVI / CVBS video output
- Material: Plastic



THC-T210-M
1 MP Fixed-lens
Turret

- 1 MP CMOS Sensor
- 2.8, 3.6 or 6 mm lens
- 40 m IR, ICR, 0.01 lux @ F1.2
- 12 VDC, Smart IR, DWDR, DNR, OSD Menu
- IP66
- Supports HD-TVI / AHD / CVI / CVBS video output
- Material: Metal



PTZ-T4225I-D
4-inch 2 MP
IR PTZ

- Up to 2 MP high definition, 25x optical zoom
- Color: 0.005 lux @ F1.6, B/W: 0.001 lux @ F1.6
- IP66, 120 dB WDR
- IR: 100 m, 12 VDC
- 8 privacy masks



PTZ-T4215I-D
4-inch 2 MP
IR PTZ

- Up to 2 MP high definition, 15x optical zoom
- Color: 0.005 lux @ F1.6, B/W: 0.001 lux @ F1.6
- IP66, 120 dB WDR
- IR: 100 m, 12 VDC
- 8 privacy masks



THC-T210-P
1 MP Fixed-lens
Turret

- 1 MP CMOS Sensor
- 2.8, 3.6 or 6 mm lens
- 40 m IR, ICR, 0.01 lux @ F1.2
- 12 VDC, Smart IR, DWDR, DNR, OSD Menu
- IP66
- Supports HD-TVI / AHD / CVI / CVBS video output
- Material: Plastic



THC-B310-VF
1 MP Varifocal
Bullet

- 1 MP CMOS Sensor
- 2.8 to 12 mm varifocal lens
- 40 m IR, ICR, 0.01 lux @ F1.2
- 12 VDC, Smart IR, DWDR, DNR, OSD Menu
- IP66
- Supports HD-TVI / AHD / CVI / CVBS video output
- Material: Metal & Plastic



PTZ-T4215-D3
4-inch 2 MP
Non-IR PTZ

- Up to 2 MP high definition, 15x optical zoom
- Color: 0.005 lux @ F1.6, B/W: 0.001 lux @ F1.6
- 120 dB WDR
- 12 VDC
- 8 privacy masks



THC-D310-VF
1 MP Varifocal
Dome

- 1 MP CMOS Sensor
- 2.8 to 12 mm varifocal lens
- 40 m IR, ICR, 0.01 lux @ F1.2
- 12 VDC, Smart IR, DWDR, DNR, OSD Menu
- IP66, IK10
- Supports HD-TVI / AHD / CVI / CVBS video output
- Material: Metal



THC-T310-VF
1 MP Varifocal
Turret

- 1 MP CMOS Sensor
- 2.8 to 12 mm varifocal lens
- 40 m IR, ICR, 0.01 lux @ F1.2
- 12 VDC, Smart IR, DWDR, DNR, OSD Menu
- IP66
- Supports HD-TVI / AHD / CVI / CVBS video output
- Material: Metal & Plastic



5 MP HOT

DVR-204U-K1
4-ch 1-HDD DVR

- 4-ch HD-TVI / AHD / CVI / CVBS video
- 1-ch, RCA (2.0 Vp-p, 1 KΩ)
4-ch audio via coaxial cable
- Up to 8 channels of IP video input (up to 8 MP resolution)
- H.265 Pro+ / H.265 Pro / H.265 / H.264+ / H.264
- 5 MP @ 12 fps/ch
- 260 1U case



5 MP HOT

DVR-208U-K1
8-ch 1-HDD DVR

- 8-ch HD-TVI / AHD / CVI / CVBS video
- 1-ch, RCA (2.0 Vp-p, 1 KΩ)
8-ch audio via coaxial cable
- Up to 16 channels of IP video input (up to 8 MP resolution)
- H.265 Pro+ / H.265 Pro / H.265 / H.264+ / H.264
- 8 MP @ 8 fps/ch
- 260 1U case



HOT 1080p

DVR-216Q-K2
16-ch 2-HDD DVR

- 16-ch HD-TVI / AHD / CVI / CVBS video
- 1-ch, RCA (2.0 Vp-p, 1 KΩ)
16-ch audio via coaxial cable
- Up to 24 channels of IP video input (up to 6 MP resolution)
- H.265 Pro+ / H.265 Pro / H.265 / H.264+ / H.264
- 4 MP Lite @ 15 fps/ch
- 380 1U case



1080p

DVR-224Q-K2
24-ch 2-HDD DVR

- 24-ch HD-TVI / AHD / CVI / CVBS video
- 1-ch, RCA (2.0 Vp-p, 1 KΩ)
- Up to 26 channels of IP video input (up to 4 MP resolution)
- H.265 Pro+ / H.265 Pro / H.265 / H.264+ / H.264
- 4 MP Lite @ 15 fps/ch
- 380 1U case



5 MP HOT

DVR-216U-K2
16-ch 2-HDD DVR

- 16-ch HD-TVI / AHD / CVI / CVBS video
- 1-ch, RCA (2.0 Vp-p, 1 KΩ)
16-ch audio via coaxial cable
- Up to 32 channels of IP video input (up to 8 MP resolution)
- H.265 Pro+ / H.265 Pro / H.265 / H.264+ / H.264
- 8 MP @ 8 fps/ch
- 380 1U case



1080p HOT

DVR-204Q-K1
4-ch 1-HDD DVR

- 4-ch HD-TVI / AHD / CVI / CVBS video
- 1-ch, RCA (2.0 Vp-p, 1 KΩ)
4-ch audio via coaxial cable
- Up to 6 channels of IP video input (up to 6 MP resolution)
- H.265 Pro+ / H.265 Pro / H.265 / H.264+ / H.264
- 4 MP Lite @ 15 fps/ch
- 260 1U case



1080p

DVR-232Q-K2
32-ch 2HDD DVR

- 32-ch HD-TVI / AHD / CVI / CVBS video
- 1-ch, RCA (2.0 Vp-p, 1 KΩ)
- Up to 34 channels of IP video input (up to 4 MP resolution)
- H.265 Pro+ / H.265 Pro / H.265 / H.264+ / H.264
- 4 MP Lite @ 15 fps/ch
- 380 1U case



HOT 1080p

DVR-204G-F1
4-ch 1-HDD DVR

- 4-ch HD-TVI / AHD / CVI / CVBS video & 1-ch audio input
- 1-ch, RCA (2.0 Vp-p, 1 KΩ)
4-ch audio via coaxial cable
- Up to 5 channels of IP video input (up to 1080p resolution)
- 1 SATA interface, HD 1080p Lite @ 25 fps/ch
- 260 1U case



1080p HOT

DVR-208Q-K1
8-ch 1-HDD DVR

- 8-ch HD-TVI / AHD / CVI / CVBS video
- 1-ch, RCA (2.0 Vp-p, 1 KΩ)
8-ch audio via coaxial cable
- Up to 12 channels of IP video input (up to 6 MP resolution)
- H.265 Pro+ / H.265 Pro / H.265 / H.264+ / H.264
- 4 MP Lite @ 15 fps/ch
- 260 1U case



1080p HOT

DVR-216Q-K1
16-ch 1-HDD DVR

- 16-ch HD-TVI / AHD / CVI / CVBS video
- 1-ch, RCA (2.0 Vp-p, 1 KΩ)
16-ch audio via coaxial cable
- Up to 24 channels of IP video input (up to 6 MP resolution)
- H.265 Pro+ / H.265 Pro / H.265 / H.264+ / H.264
- 4 MP Lite @ 15 fps/ch
- 260 1U case



HOT 1080p Lite

DVR-208G-F1
8-ch 1-HDD DVR

- 8-ch HD-TVI / AHD / CVI / CVBS video & 1-ch audio input
- 1-ch, RCA (2.0 Vp-p, 1 KΩ)
8-ch audio via coaxial cable
- Up to 10 channels of IP video input (up to 1080p resolution)
- 1 SATA interface, HD 1080p Lite @ 12 fps/ch
- 260 1U case



HOT 1080p Lite

DVR-216G-K1
16-ch 1 HDD DVR

- 16-ch HD-TVI / AHD / CVI / CVBS video & 1-ch audio input
- 1-ch, RCA (2.0 Vp-p, 1 KΩ)
16-ch audio via coaxial cable
- Up to 18 channels of IP video input (up to 5 MP resolution)
- 1 SATA interface, HD 1080p Lite @ 15 fps/ch
- 260 1U case

1080p Lite



DVR-224G-K2
24-ch 2-HDD DVR

- 24-ch HD-TVI / AHD / CVI / CVBS video & 1-ch audio input
- 1-ch, RCA (2.0 Vp-p, 1 KΩ)
- Up to 18 channels of IP video input (up to 5 MP resolution)
- 2 SATA interface, HD 1080p Lite @ 15 fps/ch
- 380 1U case

1080p Lite



DVR-232G-K2
32-ch 2-HDD DVR

- 32-ch HD-TVI / AHD / CVI / CVBS video & 1-ch audio input
- 1-ch, RCA (2.0 Vp-p, 1 KΩ)
- Up to 18 channels of IP video input (up to 5 MP resolution)
- 2 SATA interface, HD 1080p Lite @ 15 fps/ch
- 380 1U case

1080p Lite **HOT**



DVR-104G-F1
4-ch 1-HDD DVR

- 4-ch HD-TVI / AHD / CVI / CVBS video & 1-ch audio input
- 1-ch, RCA (2.0 Vp-p, 1 KΩ)
4-ch audio via coaxial cable
- Up to 5 channels of IP video input (up to 1080p resolution)
- 1 SATA interface, HD 1080p Lite @ 25 fps/ch
- Mini case

1080p Lite **HOT**



DVR-108G-F1
8-ch 1-HDD DVR

- 8-ch HD-TVI / AHD / CVI / CVBS video & 1-ch audio input
- 1-ch, RCA (2.0 Vp-p, 1 KΩ)
8-ch audio via coaxial cable
- Up to 10 channels of IP video input (up to 5 MP resolution)
- 1 SATA interface, HD 1080p Lite @ 25 fps/ch.
- Mini case

1080p Lite **HOT**



DVR-116G-K1
16-ch 1-HDD DVR

- 16-ch HD-TVI / AHD / CVI / CVBS video & 1-ch audio input
- 1-ch, RCA (2.0 Vp-p, 1 KΩ)
16-ch audio via coaxial cable"
- Up to 18 channels of IP video input (up to 5 MP resolution)
- 1 SATA interface, HD 1080p Lite @ 15 fps/ch.
- Mini case

TRANSMISSION



With an incredible cost-to-performance ratio, HiLook cables and switches feature the most reliable performance for the price. The high-quality materials used in the network cables and coaxial cables make them extremely flame-resistant. The switches support a generous Power-over-Ethernet (PoE) distance – up to 250 meters – minimizing both network investment and maintenance efforts. Additionally, their 8-core technology guarantees stable power to the switches.



NS-0105P-35(B)
Unmanaged PoE Switch

- L2, Unmanaged
- 4 * 100 M PoE port
- 1 * 100 M uplink port
- 802.3af and 802.3at
- 35 W PoE power budget
- Max. 250-meter long-distance transmission



NS-0109P-60(B)
Unmanaged PoE Switch

- L2, Unmanaged
- 8 * 100 M PoE port
- 1 * 100 M uplink port
- 802.3af and 802.3at
- 60 W PoE power budget
- Max. 250-meter long-distance transmission



NS-0106P-35
Unmanaged PoE Switch

- L2, Unmanaged
- 4 * 10/100 M PoE port
- 2 * 10/100 M uplink port
- 802.3af and 802.3at
- 35 W PoE power budget
- Max. 250-meter long-distance transmission



NS-0310P-60
Unmanaged PoE Switch

- L2, Unmanaged
- 8 * 10/100 M PoE port
- 2 * Gigabit uplink port
- 802.3af and 802.3at
- 60 W PoE power budget
- Max. 250-meter long-distance transmission



NS-0318P-130(B)
Unmanaged PoE Switch

- L2, Unmanaged
- 16 * 100 M PoE port
- 1 * 1000 M RJ45
- 1 * 1000 M SFP
- 802.3af and 802.3at
- 130 W PoE power budget
- "Extend" Mode: Port 9-16, max. 250-meter long-distance transmission



NS-0326P-230(B)
Unmanaged PoE Switch

- L2, Unmanaged
- 24 * 100 M PoE port
- 1 * 1000 M RJ45
- 1 * 1000 M SFP
- 802.3af and 802.3at
- 230 W PoE power budget
- "Extend" Mode: Port 17-24, max. 250-meter long-distance transmission



NC-6AU-W
CCA Cat 6 Network Cable

- 0.585-mm diameter, 305-meter length
- Cat.6 UTP PVC
- CCA

Brackets of Network Cameras

B1 Series Fixed-lens Bullet



HIA-J101
Junction box

D1 Series Fixed-lens Dome



HIA-J204
Inclined ceiling mount



HIA-B401-110
Wall mount



HIA-B401-110B
Wall mount



HIA-B101-110
Pendant mount



HIA-B201
Corner mount



HIA-P101
Rain shade



HIA-P103
Rain shade



HIA-J104-DM18
Junction box



HIA-B403
Wall mount

T2 Series Fixed-lens Turret



HIA-B301
Vertical pole mount



HIA-B201
Corner mount



HIA-B401-110T
Wall mount

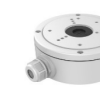


HIA-J102
Junction box

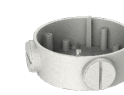
B6 Series Varifocal Bullet



HIA-B301
Vertical pole mount



HIA-J102
Junction box



HIA-J105
Junction box



HIA-B201
Corner mount

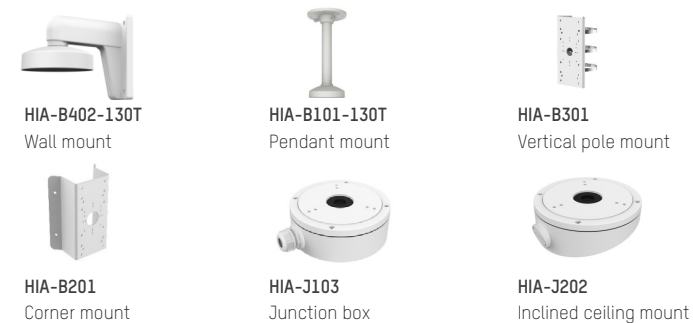
D6 Series Varifocal Dome



D7 Series Varifocal Dome



T6 series Varifoca Turret

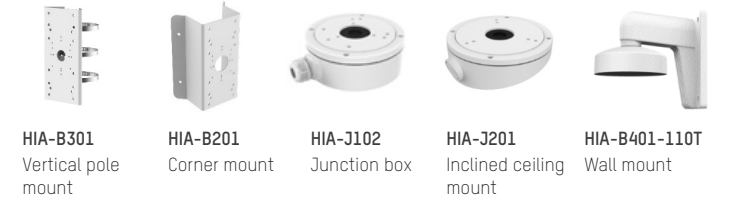


Brackets of Turbo HD Cameras

T1 (P) (M) Series Mini Turret



T2 (P) Series Turret



T2 (M) Series Turret



T3 Series Varifocal Turret



B1/B2 Series Mini Bullet



HIA-J101
Junction box

B3 Series Varifocal Bullet



HIA-B301
Vertical pole mount



HIA-B201
Corner mount



HIA-J102
Junction box

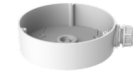
B3 Series Varifocal Bullet



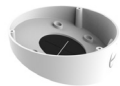
HIA-B301
Vertical pole mount



HIA-B201
Corner mount



HIA-J104-DM45
Junction box



HIA-J203-DM45
Inclined ceiling mount



HIA-B402-DM45
Wall mount



HIA-B101-DM45
Pendant mount



HIA-P102
Rain shade

Brackets of PTZ Cameras

2-inch PTZ



HIA-B404-PT
Wall mount

PanoVu Mini



HIA-B404-T
Wall mount



HIA-B101-PT10
Pendant mount

4-inch PTZ



HIA-B171
Pendant mount



HIA-B172
Pendant mount



HIA-B173
Ceiling mount



HIA-B473
Parapet wall mount



HIA-B471
Wall mount with junction box



HIA-B471-P
Vertical pole mount



HIA-B471-C
Corner mount



HIA-B471-B
Wall mount with junction box



HIA-B471-BP
Vertical pole mount with junction box



HIA-B471-BC
Wall mount with junction box



HIA-B371
Gooseneck mount



HIA-B472
Wall mount (short arm)

Headquarters

No.555 Qianmo Road, Binjiang District,
Hangzhou 310051, China
T +86-571-8807-5998
Business: overseasbusiness@hikvision.com
Technical Support: support@hikvision.com

Hikvision Australia
T +61-2-8599-4233
salesau@hikvision.com

Hikvision Azerbaijan
T +994 50 369 81 57

Hikvision Brazil
T +55-11-3318-0050
Latam.support@hikvision.com

Hikvision Canada
T +1-866-200-6690
sales.canada@hikvision.com

Hikvision Colombia
sales.colombia@hikvision.com

Hikvision Czech
T +420 29 6182640
info.cz@hikvision.com

Hikvision Europe
T +31-23-5542770
isales.eu@hikvision.com

Hikvision France
T +33 1-85-330-450
info.fr@hikvision.com

Hikvision Germany
T +49-69-401507290
sales.adch@hikvision.com

Hikvision India
T +91-22-28469900
sales@pramahikvision.com

Hikvision Indonesia
T +62-21-2933759
sales.Indonesia@hikvision.com

Hikvision Israel
T +972-79-5555590
sales.israel@hikvision.com

Hikvision Italy
T +39-0438-6902
info.it@hikvision.com

Hikvision Kazakhstan
T +7-727-9730667
nikia.panfilov@hikvision.ru

Hikvision Korea
T +82-(0)31-731-8817
sales.korea@hikvision.com

Hikvision Malaysia
T +601-7652-2413
sales.my@hikvision.com

Hikvision Mexico
T +52 55 2624 0110
sales.mexico@hikvision.com

Hikvision Pakistan
T +92-2135147526
support.pk@hikvision.com

Hikvision Philippines
sales.ph@hikvision.com

Hikvision Poland
T +48-22-460-01-50
info.pl@hikvision.com

Hikvision Romania
marketing.ro@hikvision.com

Hikvision Russia
T +7-495-669-67-99
saleru@hikvision.com

Hikvision Singapore
T +65-6684-4718
sg@hikvision.com

Hikvision South Africa
T +27877018113
sale.africa@hikvision.com

Hikvision Spain
T +34-91-737-16-55
info.es@hikvision.com

Hikvision Tashkent
T +99-87-1238-9438
uzb@hikvision.ru

Hikvision Thailand
T +662-275-9949
sales.thailand@hikvision.com

Hikvision Turkey
T +90 216 521 70 (70/71/72/73/74)
sales.tr@hikvision.com

Hikvision UAE
T +971-4-4432090
salesme@hikvision.com

Hikvision UK & Ireland
T +01628-902140
sales.uk@hikvision.com

Hikvision USA
T +1-909-895-0400
sales.usa@hikvision.com

Hikvision Vietnam
T +84-974270888
sales.vt@hikvision.com



PRODUCT CATALOG

IP Solution

Turbo HD Solution

Transmission

2021 H1